



GOOD MORNING
Have Good Trading Day

WEDNESDAY



Price is what you pay.
Value is what you get.

- Warren Buffet

MARKET PLUSE

INDIAN INDICES

| NAME | CMP | NET CH. | % |
|--------|-------|---------|-------|
| SENSEX | 27440 | -50 | -0.18 |
| NIFTY | 8324 | -7 | -0.09 |

INDIAN ADR'S

| SYMBOL | CLOSE | GAIN/ LOSS % |
|-----------|-------|--------------|
| DRREDDY | 53.45 | +0.02 |
| HDFCBANK | 56.58 | -0.89 |
| ICICIBK | 10.67 | -1.57 |
| INFY | 31.22 | -1.01 |
| TATAMOTOR | 40.95 | -0.56 |
| WIPRO | 11.69 | -0.09 |

FII AND MF ACTIVITY

| SYMBOL | In Crs. |
|------------------------|---------|
| FII's Eq (Provisional) | -756.52 |
| FII's Index Future | -924.33 |
| FII's Index Options | 704.83 |
| FII's Stock Future | 1030.40 |
| FII's Stock Options | 57.68 |
| DII's Eq (Provisional) | 979.19 |

CURRENCY

| | |
|------------|-------------|
| RBI RATE | 05-MAY-2015 |
| RUPEE - \$ | 63.5194 |
| EURO | 70.5383 |
| YEN 10 | 52.8600 |
| GBP | 95.9588 |

MARKET PLUSE

GLOBAL INDICES

| NAME | CMP | NET CH. | % |
|-----------|-------|---------|-------|
| DOW | 17928 | -142 | -0.79 |
| NASDAQ | 4939 | -77 | -1.55 |
| NIKKEI | 19531 | Unch | Unch |
| HANG SENG | 27983 | +227 | +0.82 |
| SGX NIFTY | 8322 | -40 | -0.48 |

WORLD COMMODITIES

| FUTURE | US\$ | CHANGES% |
|-------------|--------|----------|
| GOLD | 1194.3 | +1.1 |
| SILVER | 16.535 | -0.044 |
| CRUDE | 60.89 | +0.49 |
| COPPER | 2.9255 | -0.0095 |
| NATURAL GAS | 2.790 | +0.010 |

WORLD EVENTS

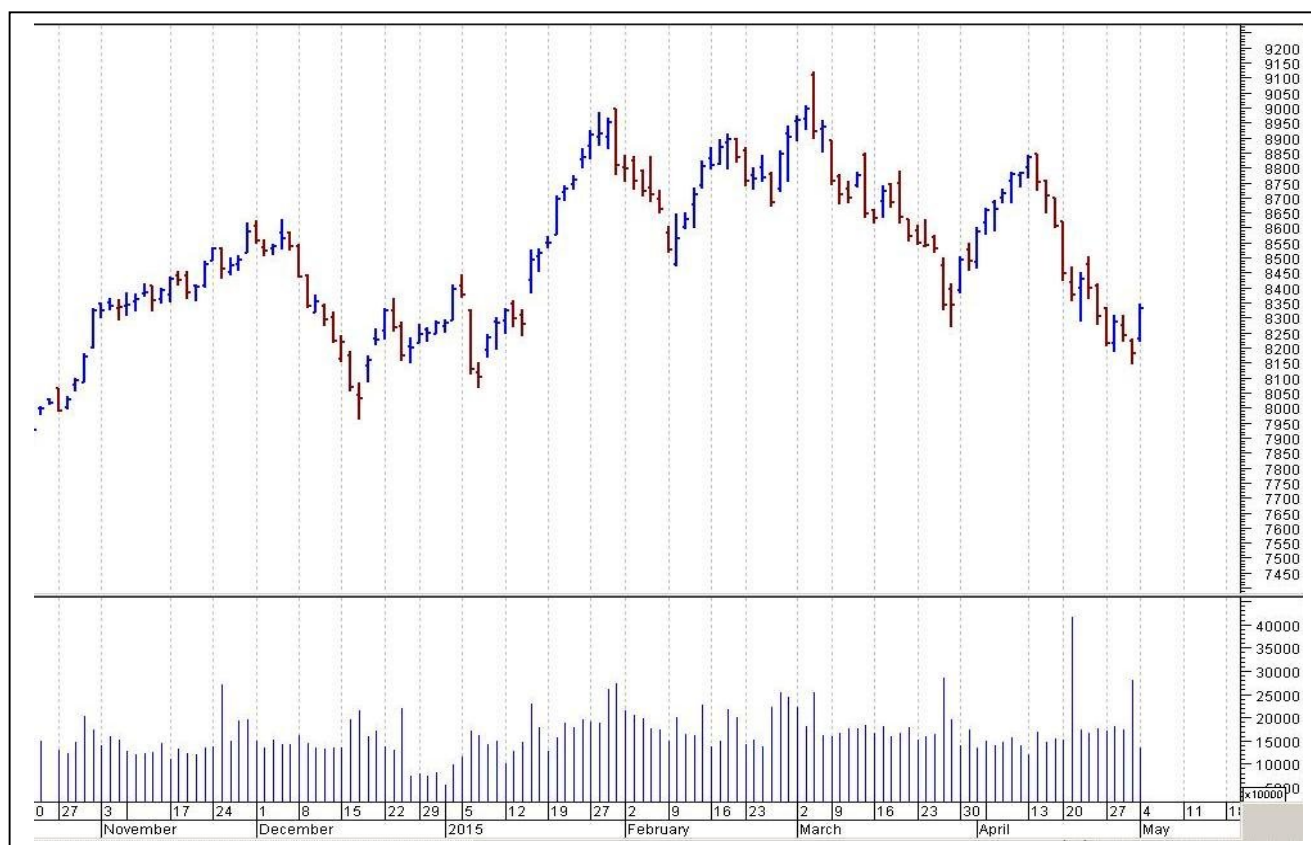
- US:ADP Non-Farm Employment Change
- Fed Chair Yellen Speaks
- Crude Oil Inventories
- UK: Services PMI

TOP STORY

- Reliance Communications looks to walk out of tower business. Looking to sell majority stake in business valued at Rs 20,000-25,000 crore: ET
- ABB India Q1 -Net profit up 5 percent at Rs 54.3 crore versus Rs 51.7 crore (YoY). Total income at Rs 1,814.6 crore versus Rs 1,827.7 crore (YoY)
- State Bank Of Travancore Q4 -Net profit at Rs 192 crore versus Rs 48.6 crore (YoY) -NII at Rs 581 crore versus Rs 615 crore (YoY). Net NPAs at 2.04 percent versus 3.06 percent (QoQ)
- Discussion on GST Bill will continue in Lok Sabha today.
- Exide infuses Rs 150 crore in life insurance company: ET
- Century Plyboard says Singapore arm enters into arrangement with Soksay Wood Factory
- Torrent Pharma to acquire Zyg Pharma for an undisclosed amount.
- Jharkhand govt requests Reliance Power to reconsider its decision of terminating the agreement for proposed Tilava Power Project



NIFTY CHART



MARKET COMMENTARY

Indian equity markets closed with flattish note in Tuesday's trade. The market however got support at lower levels as investors took note of finance minister Arun Jaitley's statement who enlightened that the government has initiated a large number of reforms in its first year of governance to encourage investments and the country has the potential to grow at 9-10%. Traders were seen piling positions in Metal, Capital Goods and Oil & Gas stocks while selling was witnessed in Power, Infra and Consumer Durables sector stocks. For today's trade Nifty likely to trade in the range between 8345 – 8370 in the upper side and 8310 – 8270 in the lower side.

MARKET LEVELS

| | CMP | SUPPORT LEVELS | | | | RESISTANCE LEVELS | | | |
|-------|------|----------------|------|------|------|-------------------|------|------|------|
| NIFTY | 8324 | 8310 | 8270 | 8250 | 8210 | 8345 | 8370 | 8395 | 8425 |



FUTURES CORNER

| SCRIPS | CLOSE | SUPPORT | TARGET | | REMARKS |
|------------|---------|-----------|--------|------|--------------|
| | | STOP LOSS | T1 | T2 | |
| APOLLOHOSP | 1209.15 | 1201 | 1235 | 1255 | TRADING CALL |
| GAIL | 373.65 | 371 | 383 | 389 | TRADING CALL |
| JSWSTEEL | 980.85 | 973 | 993 | 1004 | TRADING CALL |

EQUITY CORNER

| SCRIPS | CLOSE | SUPPORT | TARGET | | REMARKS |
|---------|-------|-----------|--------|------|--------------|
| | | STOP LOSS | T1 | T2 | |
| PEL | 982.2 | 971 | 1016 | 1034 | TRADING CALL |
| SNOWMAN | 91.15 | 89 | 96 | 98 | TRADING CALL |

DELIVERY BASED CALL / INVESTMENT CALL

| SCRIPS | CMP | SUPPORT | TARGET | | REMARK |
|--------|-----|-----------|--------|----|--------|
| | | STOP LOSS | T1 | T2 | |
| | | | | | |

BULK DEALS (BSE)

| SCRIP | CLIENT NAME | BUY/SELL | QUANTITY | PRICE |
|----------|------------------|----------|----------|-------|
| INTLCONV | R C A LTD | S | 500,000 | 46 |
| INTLCONV | SUNITA DEVI MODI | B | 500,000 | 46 |
| | | | | |

BULK DEALS (NSE)

| SCRIP | CLIENT NAME | BUY/SELL | QUANTITY | PRICE |
|----------|-------------------------------------|----------|----------|-------|
| JUBILANT | EAST BRIDGE CAP MTR FD LTD | BUY | 6000000 | 150 |
| JUBILANT | MORGAN STANLEY ASIA (SINGAPORE) PTE | BUY | 2729573 | 150 |
| JUBILANT | GA GLB INV LTD | SELL | 8590339 | 150 |

SCRIP'S IN F&O BAN

(To resume for normal trading below 80% of market wide limit required)

NIL



| NIFTY 50 STOCKS: SUPPORT & RESISTANCE | | | | | | |
|---------------------------------------|---------|-----------|-----------|-------------|-------------|-------------|
| Symbol | Close | Support 1 | Support 2 | Pivot Point | Resistance1 | Resistance2 |
| ACC | 1471.40 | 1456.12 | 1440.83 | 1467.38 | 1482.67 | 1493.93 |
| AMBUJACEM | 239.20 | 236.33 | 233.47 | 238.67 | 241.53 | 243.87 |
| ASIANPAINT | 781.40 | 771.75 | 762.10 | 778.30 | 787.95 | 794.50 |
| AXISBANK | 565.85 | 560.82 | 555.78 | 567.53 | 572.57 | 579.28 |
| BAJAJ-AUTO | 2061.65 | 2031.30 | 2000.95 | 2059.60 | 2089.95 | 2118.25 |
| BANKBARODA | 170.00 | 168.52 | 167.03 | 170.58 | 172.07 | 174.13 |
| BHARTIARTL | 387.05 | 382.37 | 377.68 | 387.18 | 391.87 | 396.68 |
| BHEL | 245.15 | 241.77 | 238.38 | 245.38 | 248.77 | 252.38 |
| BPCL | 777.30 | 767.82 | 758.33 | 777.48 | 786.97 | 796.63 |
| CAIRN | 214.25 | 211.27 | 208.28 | 215.58 | 218.57 | 222.88 |
| CIPLA | 662.30 | 654.42 | 646.53 | 665.03 | 672.92 | 683.53 |
| COALINDIA | 364.40 | 360.97 | 357.53 | 364.93 | 368.37 | 372.33 |
| DRREDDY | 3402.65 | 3362.47 | 3322.28 | 3391.23 | 3431.42 | 3460.18 |
| GAIL | 373.35 | 366.82 | 360.28 | 370.63 | 377.17 | 380.98 |
| GRASIM | 3580.50 | 3548.70 | 3516.90 | 3586.85 | 3618.65 | 3656.80 |
| HCLTECH | 911.95 | 901.73 | 891.52 | 915.37 | 925.58 | 939.22 |
| HDFC | 1180.35 | 1171.70 | 1163.05 | 1186.75 | 1195.40 | 1210.45 |
| HDFCBANK | 987.65 | 981.03 | 974.42 | 992.47 | 999.08 | 1010.52 |
| HEROMOTOCO | 2357.45 | 2335.37 | 2313.28 | 2362.93 | 2385.02 | 2412.58 |
| HINDALCO | 139.35 | 134.40 | 129.45 | 137.30 | 142.25 | 145.15 |
| HINDUNILVR | 879.05 | 860.90 | 842.75 | 872.15 | 890.30 | 901.55 |
| ICICIBANK | 328.45 | 326.73 | 325.02 | 328.82 | 330.53 | 332.62 |
| IDEA | 178.95 | 176.55 | 174.15 | 178.75 | 181.15 | 183.35 |
| IDFC | 166.90 | 165.33 | 163.77 | 167.57 | 169.13 | 171.37 |
| INDUSINDBK | 836.55 | 830.12 | 823.68 | 838.03 | 844.47 | 852.38 |
| INFY | 1962.75 | 1941.97 | 1921.18 | 1972.83 | 1993.62 | 2024.48 |
| ITC | 326.25 | 323.57 | 320.88 | 326.28 | 328.97 | 331.68 |
| KOTAKBANK | 1423.25 | 1367.05 | 1310.85 | 1398.25 | 1454.45 | 1485.65 |
| LT | 1642.40 | 1624.43 | 1606.47 | 1644.72 | 1662.68 | 1682.97 |
| LUPIN | 1811.75 | 1794.80 | 1777.85 | 1812.25 | 1829.20 | 1846.65 |
| M&M | 1179.25 | 1164.47 | 1149.68 | 1183.23 | 1198.02 | 1216.78 |
| MARUTI | 3793.05 | 3751.40 | 3709.75 | 3778.20 | 3819.85 | 3846.65 |
| NMDC | 135.25 | 130.38 | 125.52 | 133.57 | 138.43 | 141.62 |
| NTPC | 150.50 | 148.57 | 146.63 | 150.33 | 152.27 | 154.03 |
| ONGC | 342.15 | 332.70 | 323.25 | 337.95 | 347.40 | 352.65 |
| PNB | 165.85 | 164.53 | 163.22 | 166.42 | 167.73 | 169.62 |
| POWERGRID | 143.15 | 140.92 | 138.68 | 143.78 | 146.02 | 148.88 |
| RELIANCE | 892.15 | 884.23 | 876.32 | 893.02 | 900.93 | 909.72 |
| SBIN | 272.05 | 269.93 | 267.82 | 273.47 | 275.58 | 279.12 |
| SSLT | 226.70 | 215.03 | 203.37 | 221.72 | 233.38 | 240.07 |
| SUNPHARMA | 958.45 | 952.33 | 946.22 | 956.17 | 962.28 | 966.12 |
| TATAMOTORS | 510.45 | 505.77 | 501.08 | 510.73 | 515.42 | 520.38 |
| TATAPOWER | 76.10 | 75.62 | 75.13 | 76.48 | 76.97 | 77.83 |
| TATASTEEL | 380.10 | 368.30 | 356.50 | 374.65 | 386.45 | 392.80 |
| TCS | 2517.85 | 2499.75 | 2481.65 | 2518.10 | 2536.20 | 2554.55 |
| TECHM | 609.95 | 603.20 | 596.45 | 611.60 | 618.35 | 626.75 |
| ULTRACEMCO | 2709.20 | 2686.17 | 2663.13 | 2712.08 | 2735.12 | 2761.03 |
| WIPRO | 544.90 | 541.32 | 537.73 | 544.83 | 548.42 | 551.93 |
| YESBANK | 857.45 | 849.25 | 841.05 | 857.40 | 865.60 | 873.75 |
| ZEEL | 315.60 | 311.78 | 307.97 | 316.62 | 320.43 | 325.27 |



CORPORATE ACTION / BOARD MEETINGS

NSE Download Ref.No.:NSE/SURV/29520:- Star Ferro and Cement Limited (SFCL) shall be transferred from trade for trade segment (series: BE) to rolling segment (series: EQ) with effect from May 08, 2015 (Friday).

NSE Download Ref.No.:NSE/CML/29579:- Change in name of company SahPetroleums Limited to GP Petroleums Limited. Symbol will change from SAHPETRO to GULFPETRO wef May 6, 2015

NSE Download Ref.No.:NSE/CML/29586:- Change in Symbol and Name of the Company - SesaSterlite Limited to Vedanta Limited. Symbol will change from SSLT to VEDL wef May 7, 2015

NSE Download Ref.No.: NSE/CML/29610:-Listing of Equity Shares of MEP Infrastructure Developers Limited (MEP)(IPO)effective from May 06, 2015

NSE Download Ref No :NSE/FAOP/29619:- Introduction of Futures & Options Contracts on 7 Additional Individual Securities: DHFL, KSCL, AJANTPHARM, BRITANNIA, SOUTHBANK, OIL, BEL WEF MAY 29, 2015

BOARD MEETINGS

| COMPANY NAME | DATE | PURPOSE | RS. PER SH. |
|--------------|-----------|----------------------------------|-------------|
| IBULHSGFIN | 6-May-15 | Dividend | 9 |
| CASTROLIND | 6-May-15 | Dividend | 4 |
| IBVENTURES | 6-May-15 | Dividend | 1 |
| FOSECOIND | 7-May-15 | Dividend | 3.5 |
| XCHANGING | 8-May-15 | Annual General Meeting | |
| GMBREW | 8-May-15 | Annual General Meeting/ Dividend | 2.5 |
| RELIANCE | 8-May-15 | Dividend | 10 |
| HINDUJAVEN | 8-May-15 | Dividend | 15 |
| APTECHT | 11-May-15 | Dividend | 1.75 |
| HINDZINC | 12-May-15 | Dividend | 2.5 |
| SUNCLAYLTD | 13-May-15 | Dividend | |
| MYSOREBANK | 14-May-15 | Annual General Meeting/ Dividend | 1 |
| NESTLEIND | 19-May-15 | Annual General Meeting/ Dividend | 12.5 |
| HARITASEAT | 22-May-15 | Dividend | |
| RIIL | 26-May-15 | Annual General Meeting/ Dividend | 3.5 |
| | | | |
| | | | |
| | | | |
| | | | |
| | | | |
| | | | |
| | | | |

NEWS & RUMOURS:

- Gold (Spot Dollar) major support = \$1167/\$1148 & Resistance = \$1222/\$1248.
- Crude oil range->\$55 to \$65.
- Global Bonds Sell Off as Oil Fuels Inflation Concern; Gold Gains: - Treasuries fell with European bonds as oil's rally above \$60 a barrel added to signs of higher inflation, while concern rose that [Greece](#) won't be able to resolve its debt crisis. Gold advanced and U.S. stocks slid.
- Greece Says Compromise Not Possible Under Current Conditions: - Greece blamed international creditors for the failure to achieve a breakthrough in bailout talks, saying a deal won't be possible until they agree on a common set of demands.
- Gold continues rally amid weaker dollar, widening of U.S. trade deficit: - Gold futures moved slightly higher on Tuesday extending gains from one session earlier, as the dollar weakened amid a soft batch of U.S. economic data.
- WTI oil races above \$60 a barrel ahead of U.S. API supply report: - West Texas Intermediate oil futures rallied above the \$60-level for the first time since December on Tuesday, as traders looked ahead to weekly data on U.S. stockpiles of crude and refined products later in the day.
- Natural gas futures retreat from near 6-week high on warm weather outlook: - U.S. natural gas prices edged lower on Tuesday, but held near the previous session's six-week peak, supported by forecasts for warmer weather across the U.S. in the week ahead.

TRENDS & OUTLOOK – DATE: 06- May- 2015

PRECIOUS METALS:

| COMMDITY (MCX) | S2 | S1 | PIVOT POINT | R1 | R2 |
|----------------|-------|-------|-------------|-------|-------|
| GOLD (June) | 26400 | 26631 | 26900 | 27192 | 27475 |
| SILVER (July) | 35500 | 36700 | 37900 | 39040 | 40365 |

BASE METALS

| COMMDITY (MCX) | S2 | S1 | PIVOT POINT | R1 | R2 |
|----------------|--------|--------|-------------|--------|--------|
| COPPER (June) | 404 | 408 | 414 | 419 | 425 |
| ZINC (May) | 145.65 | 148.30 | 151.55 | 155.95 | 158.20 |
| LEAD (May) | 130.30 | 133.20 | 136.55 | 139.30 | 141.55 |
| NICKEL (May) | 865 | 882 | 903 | 924 | 945 |

ENERGY

| COMMDITY (MCX) | S2 | S1 | PIVOT POINT | R1 | R2 |
|-------------------|------|------|-------------|------|------|
| CRUDE OIL (May) | 3600 | 3725 | 3830 | 3945 | 4075 |
| NATURAL GAS (May) | 165 | 172 | 178 | 183 | 189 |

DATE TALKS : TODAY'S ECONOMIC DATA :

HSBC Services PMI of China, ADP Non-Farm Employment Change, Prelim Unit Labor Costs, Prelim Nonfarm Productivity, Fed Chair Yellen Speaks, Crude Oil Inventories, FOMC Member Lockhart Speaks.



Registered Office

Indira House, 3rd Floor, 5 Topiwala Lane,
Opp. Lemington Road Police Station, Grant Road (East), Mumbai - 400007.

Corporate Office

'Ramavat House' E-15, Saket Nagar, Indore - 452018 (M.P.)

Customer Care

Tel: +91-731-4097170/ 71/ 72/ 73/ 74 M. +91 93031 72345

Email: customercare@indiratrade.com www.indiratrade.com



INSTITUTIONAL DEALING UNIT

Africa House, 5, Topiwalla Lane, Lamington Road, Mumbai, 400007

Tel: +91 22 30080678 Fax : +91 22 23870767 Email : ie@indiratrade.com